



October 2016, Kottlingbrunn/Austria

## PRESS RELEASE

WITTMANN BATTENFELD at the K 2016

### **WITTMANN BATTENFELD at the K 2016 with smart, newly revised vertical rotary table machine**

***Under the motto “be smart”, WITTMANN BATTENFELD is presenting at the K 2016 in Düsseldorf its new, smart vertical rotary table machine in C frame design with the new UNILOG B8 control system from 19 to 26 October in hall 16, booth D22.***

With its vertical rotary table machines, WITTMANN BATTENFELD is a leading player in the industry. The vertical machine technology with open access to the mold space from all sides has been the key to market success for many years. The rotary table machines from WITTMANN BATTENFELD are available with clamping forces ranging from 400 to 2,700 kN and rotary table diameters from 752 to 1,755 mm. The insertion and removal area can be protected by light screens, thus providing optimal access for parts removal and excellent conditions for implementing automation concepts. In this way, the machine series is ideally suited for both manual and automatic removal processes.

At this year's K trade fair, WITTMANN BATTENFELD is showcasing its new, vertical rotary table machine with C frame design and servo drive technology in combination with the new UNILOG B8 control system. In these machines, currently available with 400 kN and 800 kN clamping force, both the barrier-free clamping unit and the servo-controlled injection unit are placed in a vertical position. The vertical C frame configuration with two symmetrical clamping cylinders provides a maximum of free space in the mold area and consequently optimal accessibility.

The new CM series is equipped with a ServoPower drive as standard. This also makes the machines from the new CM series operate with extreme energy efficiency, low noise levels and high precision. The machines from the CM series can be supplied as purely vertical machines, as sliding table models or with a rotary table. Depending on the requirements profile, the rotary table machines can be supplied in two different sizes. So the CM 40 with 400 kN clamping force is available as a compact rotary table model with a diameter of 752 mm, or as a generously

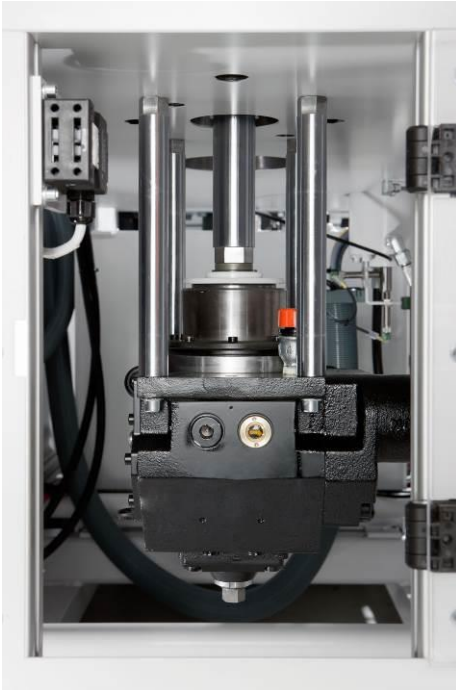


dimensioned variant with a rotary table diameter of 1280 mm. The CM 80 with 800 kN clamping force can be equipped with a rotary table in diameters of either 1280 or 1520 mm.

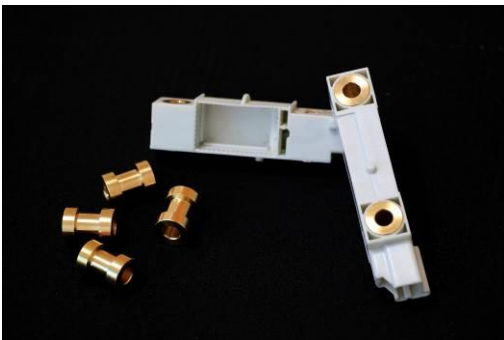
At the K, the functionality of the new CM series will be demonstrated by a CM 40/210 R1280. On this machine, a connector housing made of PBT will be manufactured by insert molding with a 2-cavity mold. The machine is equipped with an insertion and parts removal automation system. A W821 robot from WITTMANN places the inserts into the mold, removes the finished parts and transports them to the WITTMANN W818 robot. This second robot picks them up with the help of a camera system and deposits them on trays.



**Fig. 1:** The new CM 40 with rotary table and UNILOG B8 control system



**Fig. 2:** Servo-electric ejector of CM 40



**Fig. 3:** Connector housings

### **The WITTMANN Group**

The WITTMANN Group is a worldwide leader in the manufacturing of injection molding machines, robots and peripheral equipment for the plastics industry. Headquartered in Vienna/Austria, the WITTMANN Group consists of two main divisions, WITTMANN BATTENFELD and WITTMANN, which operate 9 production facilities in 6 countries, including 32 direct subsidiary offices located in all major plastics markets around the world.



**Wittmann**

**Battenfeld**

WITTMANN BATTENFELD focuses on independent market growth in the manufacturing of state-of-the-art injection molding machines and process technology, providing a modern and comprehensive range of machinery in a modular design that meets the actual and future requirements of the plastic injection molding market.

WITTMANN's product range includes robots and automation systems, material handling systems, dryers, gravimetric and volumetric blenders, granulators, mold temperature controllers and chillers. With this comprehensive range of peripheral equipment, WITTMANN can provide plastics processors with solutions that cover all production requirements, ranging from autonomous work cells to integrated plant-wide systems.

The syndication of the WITTMANN Group has led to connectivity between all product lines, providing the advantage plastics processors have been looking for in terms of a seamless integration of injection molding machines, automation and auxiliary equipment – all occurring at a progressive rate.

**Contact:**

**WITTMANN BATTENFELD GmbH & Co.KG**

Werner-Battenfeld-Strasse 1

D-58540 Meinerzhagen

Tel.: +49 2354 72-0

Fax: +49 2354 72-485

[info@wittmann-group.com](mailto:info@wittmann-group.com)

[www.wittmann-group.com](http://www.wittmann-group.com)

**WITTMANN BATTENFELD GmbH**

Wiener Neustädter Strasse 81

A-2542 Kottlingbrunn

Tel.: +43 2252 404-1400

Fax: +43 2252 404-991400

[gabriele.hopf@wittmann-group.com](mailto:gabriele.hopf@wittmann-group.com)

[www.wittmann-group.com](http://www.wittmann-group.com)